

BikeSacRegion365



A guide to the California E-Bike Voucher Program



Provided by:

**SACRAMENTO AREA
BICYCLE ADVOCATES**



WHAT IS THE E-BIKE VOUCHER PROGRAM?

The California E-Bike Incentive Project will provide qualified applicants with a voucher for \$1,000 towards a regular e-bike or \$1750 for a cargo or adaptive e-bike. Vouchers will be applied at the time of bike purchase.

People with lower income who live in a disadvantaged community (LIDAC) will receive an additional credit of \$250.

The voucher program is administered by Pedal Ahead San Diego (pedalaheads.org) for the California Air Resources Board (CARB).

Qualified applicants with:	Maximum Incentive Amount
Gross annual household income 226% - 300% of FPL	\$1,000
Gross annual household income ≤ 225% of FPL	\$1,250
Resides in a disadvantaged community or low-income community	\$1,250
Gross annual household income 226% - 300% of FPL, purchasing a cargo or adaptive e-bike	\$1,750
Gross annual household income ≤ 225% of FPL, purchasing a cargo or adaptive e-bike	\$2,000

Buyers may combine this credit with rebates and incentives offered by other sources, but these funds cannot be used in conjunction with other California Air Resource Board (CARB) programs like Clean Cars 4 All.

DO I QUALIFY?

E-bike voucher funds are available to California residents 18 years of age and up with the following forms of identification:

- Current, valid CA Driver's License
- Current, valid CA AB 60 License
- Current, valid CA ID card

If your current address does not match the address on your ID, additional documentation will be required (a utility bill, rental agreement, bank statement etc.).

One voucher will be approved per household whose gross income does not exceed 300% of the FPL listed below:

	Highest Priority	
Persons in Household	225% FPL Gross Income Limit	300% FPL Gross Income Limit
1	\$32,805	\$43,740
2	\$44,370	\$59,160
3	\$55,935	\$74,580
4	\$67,500	\$90,000
5	\$79,065	\$105,420
6	\$90,630	\$120,840
7	\$102,195	\$136,260
8	\$113,760	\$151,680
For households with more than eight persons, add \$11,565 for each additional person (225%) or \$15,420 for each additional person (300%)		

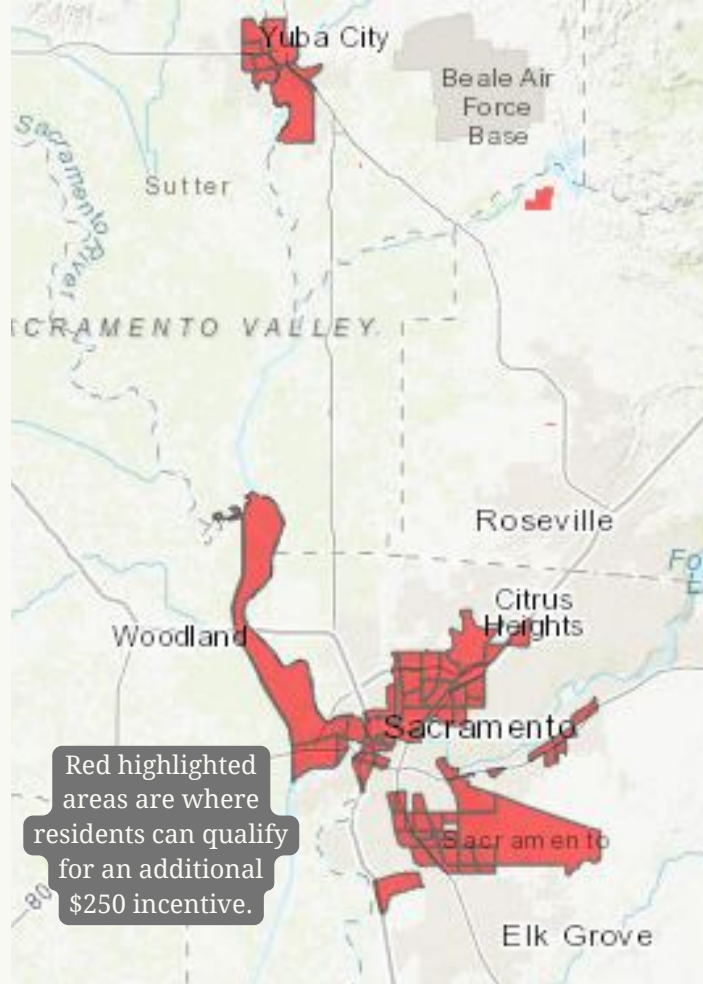
APPLICATION PROCESS

1. Once the program begins, create an account on ebikeincentives.org.
2. Complete the application:
 - a. Basic Info
 - b. California Residency Verification (US citizenship verification is not required- a state ID card is fine)
 - c. Income Verification
3. Submit your application:
 - a. **APPLY EARLY.** We expect funding to run out. Applications will be approved on a first come basis until \$2.5mil. has been spent. Lower income applicants will have priority for the remaining \$5mil.
4. Wait for an email regarding a decision on your application.
5. If approved, complete the safety and environmental impact trainings online.
6. Redeem a voucher! Applicants have 45 days to use their voucher funds. Find approved retailers through the ebikeincentive.org website.
7. Applicants must own the new e-bike for at least one year and complete a program survey.

Depending on the number of applications, a wait list may be created pending additional funding.

BIKE ACCESSORIES Voucher funds can be applied towards e-bike related accessories including: helmets, bike lock, racks, fenders, and reflective clothing.

SABA is a nonprofit organization dedicated to making our region a safer, healthier, and friendlier place to ride a bike, whether for commuting, recreation, or exercise, for all people, regardless of race, income or ability.



APPLY While you can't apply for an e-bike voucher yet, the program is expected to launch statewide in late 2023 or early 2024.

EBIKEINCENTIVES.ORG

FOR for more information and to apply for a voucher when enrollment begins, please visit ebikeincentives.org or scan the QR code.



WHICH E-BIKES QUALIFY?

Qualifying e-bikes must meet the following criteria:

- Bike must be new
- Class 1, 2, or 3
- Electric motor of 750 watts or less
- Come with manufacturer warranty of at least one year and covers electrical components
- Come with integrated front and rear lights
- Bike must be handed to participant fully assembled (no DIY or home assembly)
- Cargo bikes must be designed to carry at least one additional passenger OR bulkier loads than standard e-bikes can carry, and have an extended frame length greater than 68 inches
- No regular to electric conversions

Scan here to sign up for email notifications from BSR365 about the Voucher Program!



@BIKESACREGION365
BIKESACREGION365.NET
SACBIKE.ORG